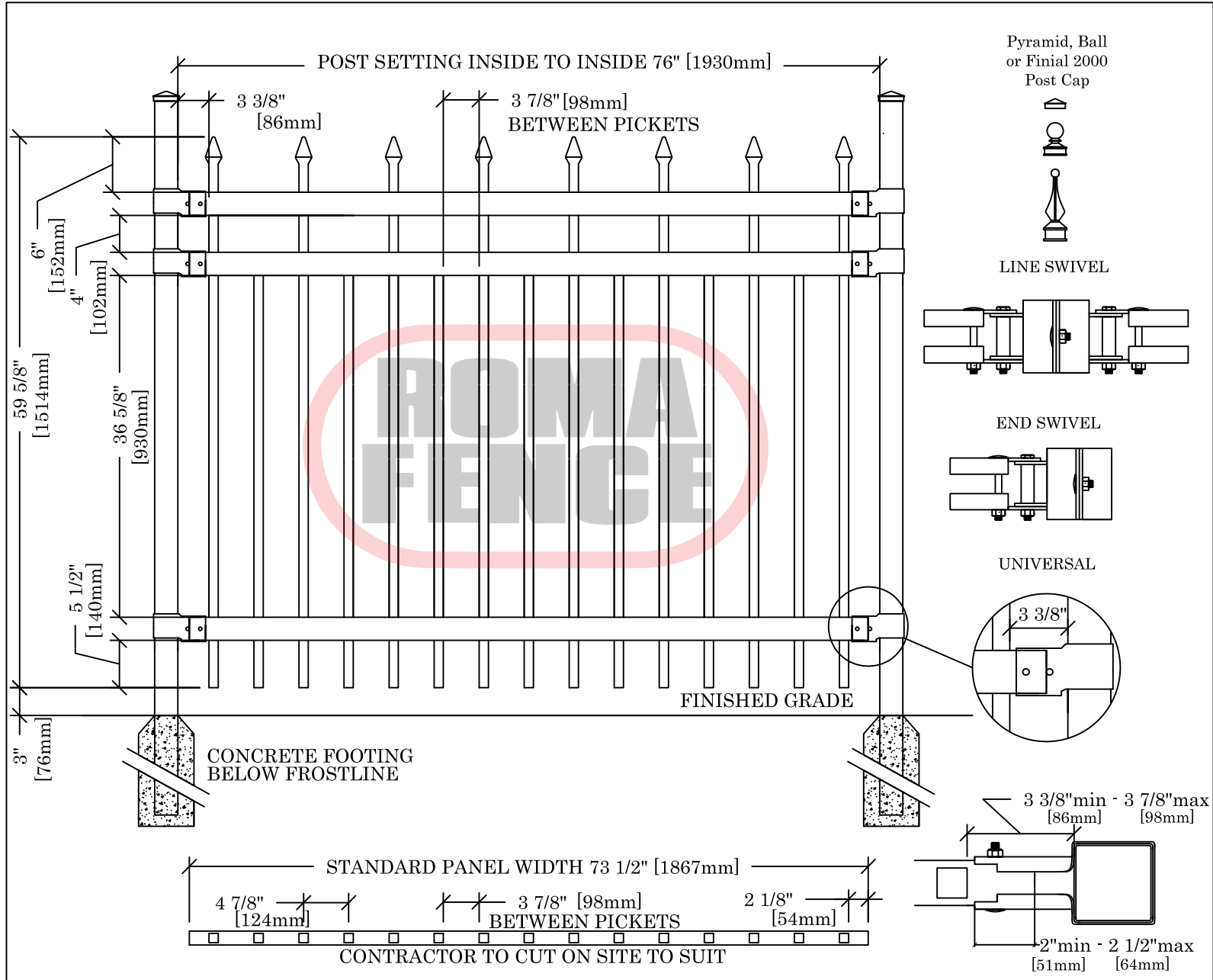


THE IMPERIAL PLUS COLLECTION

KNIGHT PLUS



SPECIFICATIONS

POSTS, RAILS, PICKETS		Fittings:	15 Gauge Stamp Forged Factory Finish, As Above
Cold Formed Steel Tubing, Interior & Exterior Galvalume Coating, Chromate Conversion Coating, Electrostatically Applied, Thermally Bonded Polyester Powder Coating Minimum Film Thickness 2.5 Mils E-Coat dipped prime coat (optional)		Welds:	Stainless Steel
Posts:	3" x 3" (76mm x 76mm) Schedule 40 4" x 4" (102mm x 102mm) Schedule 40 6" x 6" (152mm x 152mm) Schedule 40	Standard Panel Width:	73 1/2" (1867mm)
Standard Post Spacing:	76" (1930mm) Inside Dimension	Standard Panel Heights:	47 5/8" (1210mm) 59 5/8" (1514mm) Custom Heights Available* * E-Coat only available 6' & under
Post Caps:	Pyramid, Ball or Finial 2000	Standard Gate Openings Inside Posts:	50 1/2" (1283mm) 60 1/4" (1530mm) 70" (1778mm)
Rails:	2 1/2" x 1 1/2" (64mm x 38mm) 14 Gauge	Colours:	Standard - High Gloss Black, High Gloss White Optional Colours - Fence Brown, Fence Green Custom Colours Available Upon Request
Pickets:	1" x 1" (25mm x 25mm) 18 Gauge	Warranty:	See Warranty Supplement

