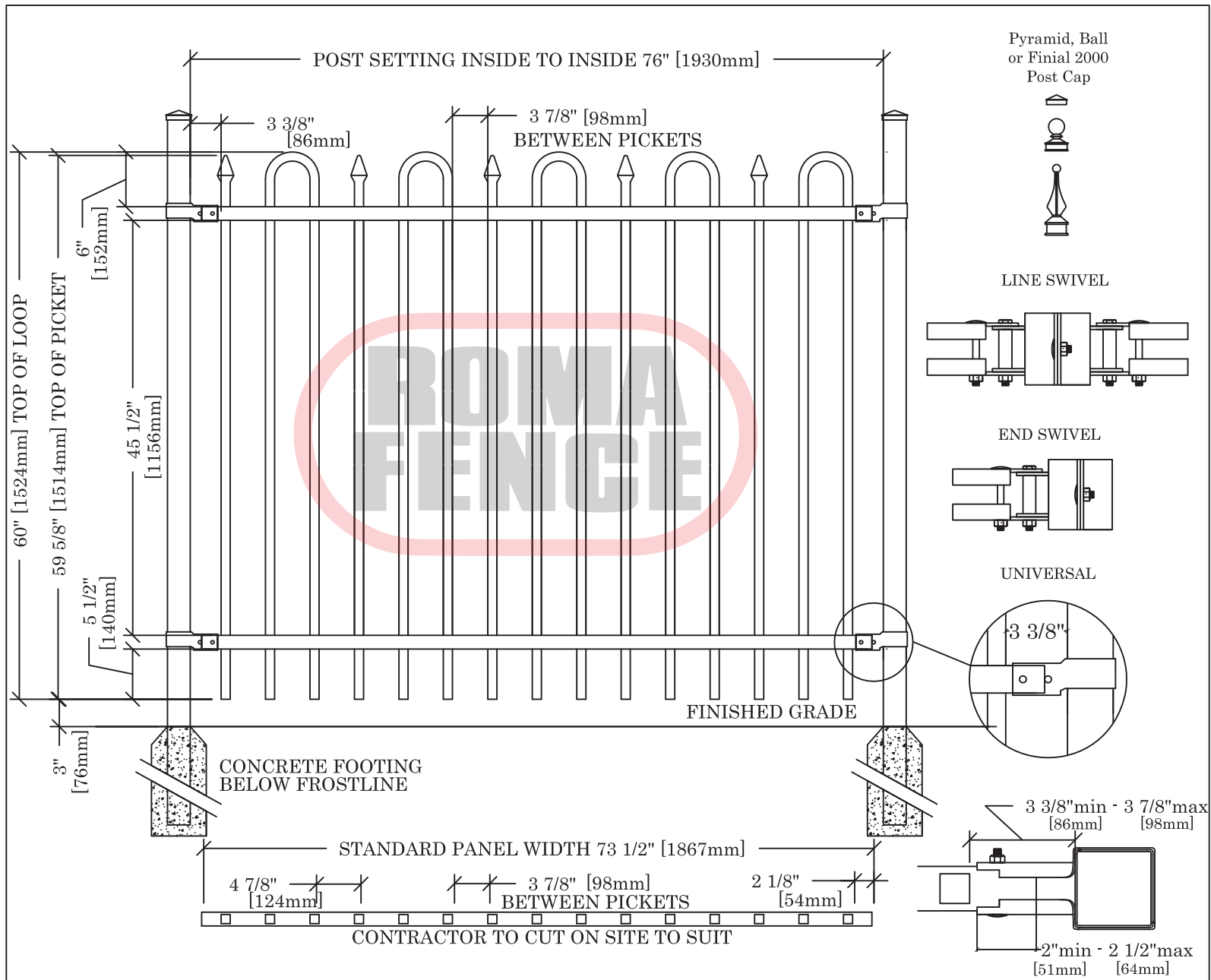


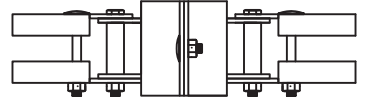
THE IMPERIAL COLLECTION PRINCE



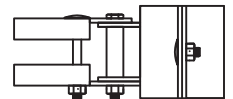
Pyramid, Ball
or Finial 2000
Post Cap



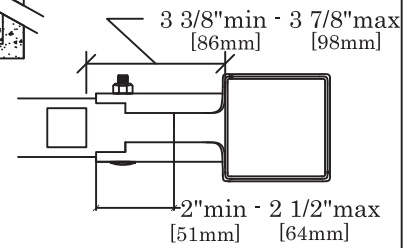
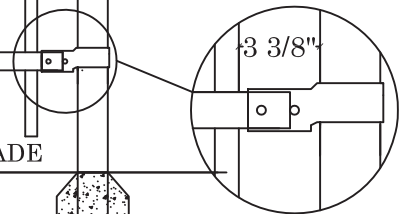
LINE SWIVEL



END SWIVEL



UNIVERSAL



SPECIFICATIONS

POSTS, RAILS, PICKETS		Fittings:	15 Gauge Stamp Forged Factory Finish, As Above
Cold Formed Steel Tubing, Interior & Exterior Galvalume Coating, Chromate Conversion Coating, Electrostatically Applied, Thermally Bonded Polyester Powder Coating Minimum Film Thickness 2.5 Mils		Welds:	Stainless Steel
		Standard Panel Width:	73 1/2" (1867mm)
		Standard Panel Heights:	48" (1219mm) 60" (1524mm) Custom Heights Available
Posts:	2 1/2" x 2 1/2" (64mm x 64mm) 14 Gauge	Standard Gate Openings	45 1/2" (1156mm)
Standard Post Spacing:	76" (1930mm) Inside Dimension	Inside Posts:	60 1/4" (1530mm) 74 1/2" (1892mm)
Post Caps:	Pyramid, Ball or Finial 2000	Colours:	Standard - High Gloss Black, High Gloss White Optional Colours - Fence Brown, Fence Green Custom Colours Available Upon Request
Rails:	1 1/2" x 1 1/2" (38mm x 38mm) 14 Gauge	Warranty:	See Warranty Supplement
Pickets:	1" x 1" (25mm x 25mm) 18 Gauge		

