

DESIGN INFO TABLE

DESIGN WIND PRESSURE (Pa)	535	535
POST SPACING (m)	2	2
WALL HEIGHT (m)	2.4	5.1
DURACRETE PANEL THICKNESS (mm)	34	34
CAISSON DIAMETER (m)	0.46	0.46
CAISSON COHESIVE SOIL DEPTH (m)	1.35	1.96
CAISSON COHESIVELESS SOIL DEPTH (m)	1.975	3.070

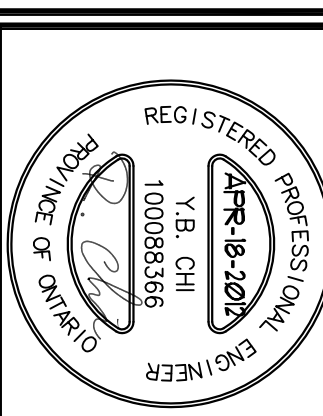
SITE MAP

GENERAL NOTES

- REFERENCE WIND PRESSURE $q = 0.535 \text{ kPa}$.
- PRECAST CONCRETE PANELS: 30MPa AIR ENHANCED 5% TO 7%.
- FOUNDATION CONCRETE: 30MPa.
- REINFORCING STEEL: MIN. YIELD STRENGTH 400MPa.
- STAINLESS STEEL WIRE: MIN. YIELD STRENGTH 500MPa.
- THE STRUCTURAL STEEL SHALL CONFORM TO CSA S16-09 AND CSA G40-21 TYPE 350W (LATEST EDITION).
- STEEL POST TO BE HOT DIPPED GALVANIZED PER CSA G164-M92.
- THE CAISSONS SHALL BE INSTALLED IN AN ENGINEERED FILL COMPACTED TO 98% STANDARD PROCTOR OR NATIVE UNDISTURBED SOIL.
- WHERE FOOTINGS ARE INSTALLED WITHIN 1m FROM DOWNWARD SLOPE OF 3:1 OR STEEPER, INCREASE CAISSON DEPTH BY 0.5m.
- THE FINAL FOOTING DEPTH TO BE DETERMINED BY ACTUAL SITE SOIL CONDITIONS. SOIL CONSULTANT TO PROVIDE FURTHER RECOMMENDATION DURING EXCAVATION PROCESS.

NOT FOR CONSTRUCTION

2	SUBMITTED TO MTO	B.H.	12/04/12
1	DETAILED DESIGN	B.H.	11/11/11
	REVISION	BY	DATE



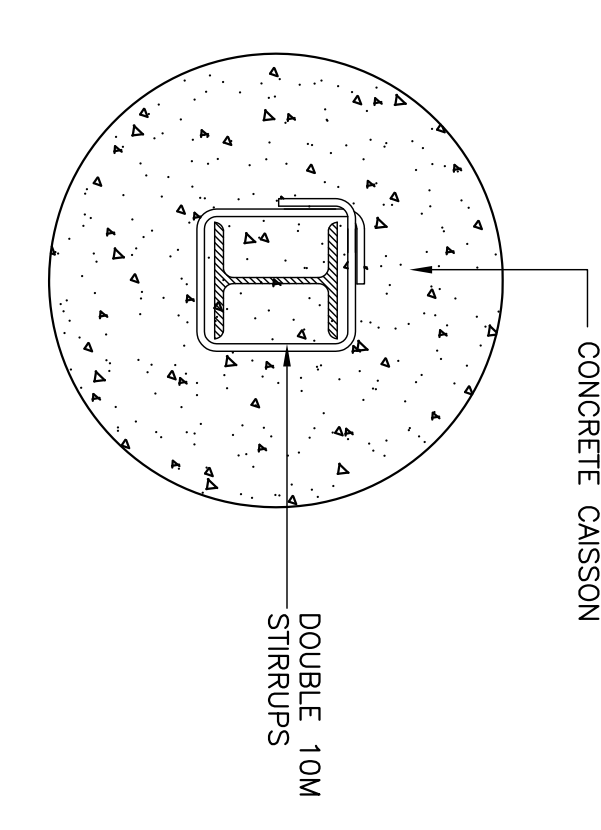
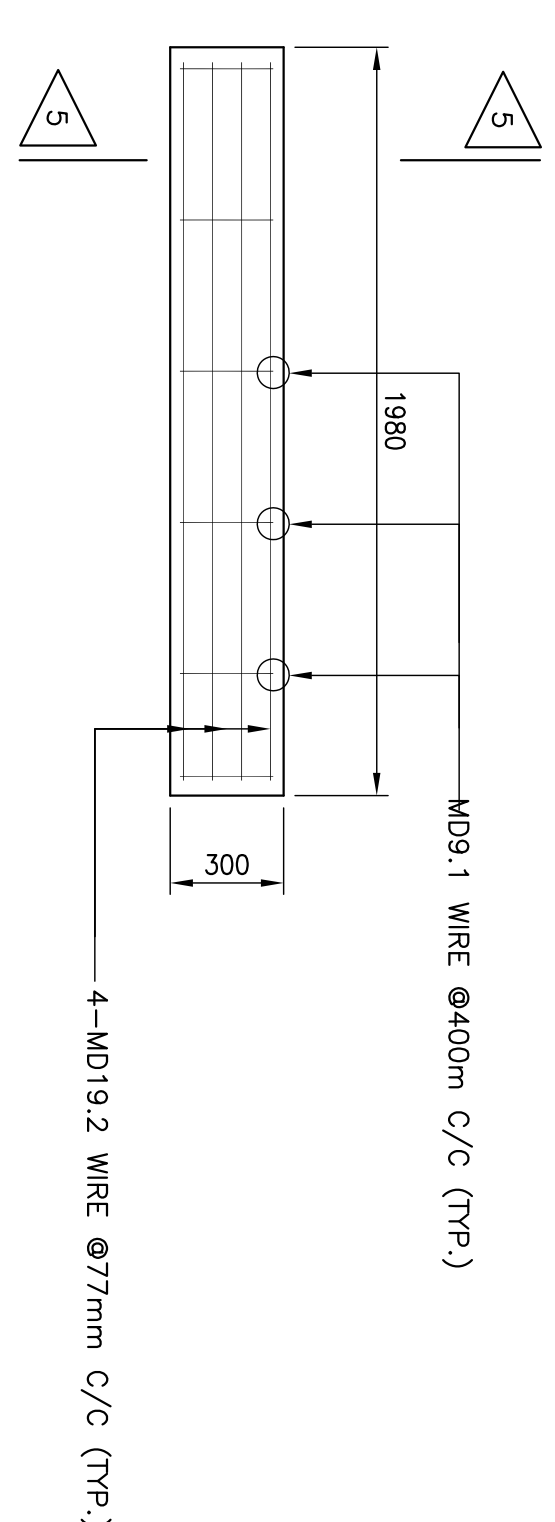
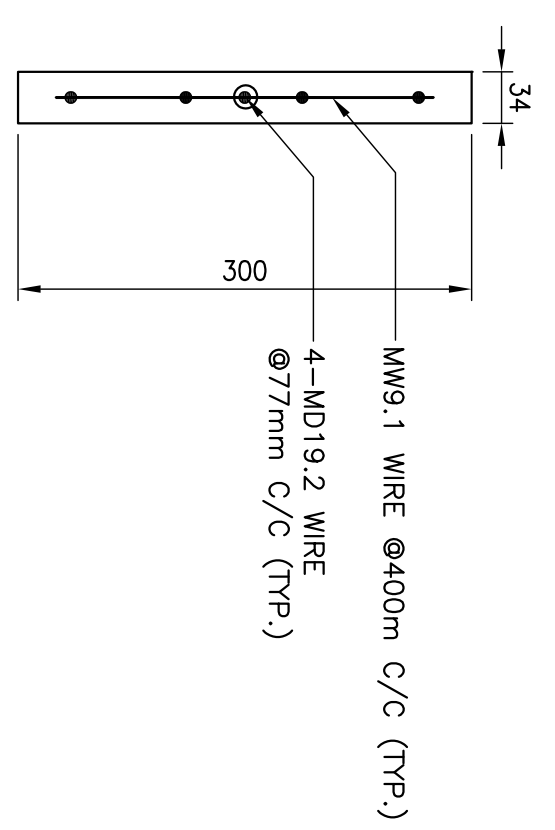
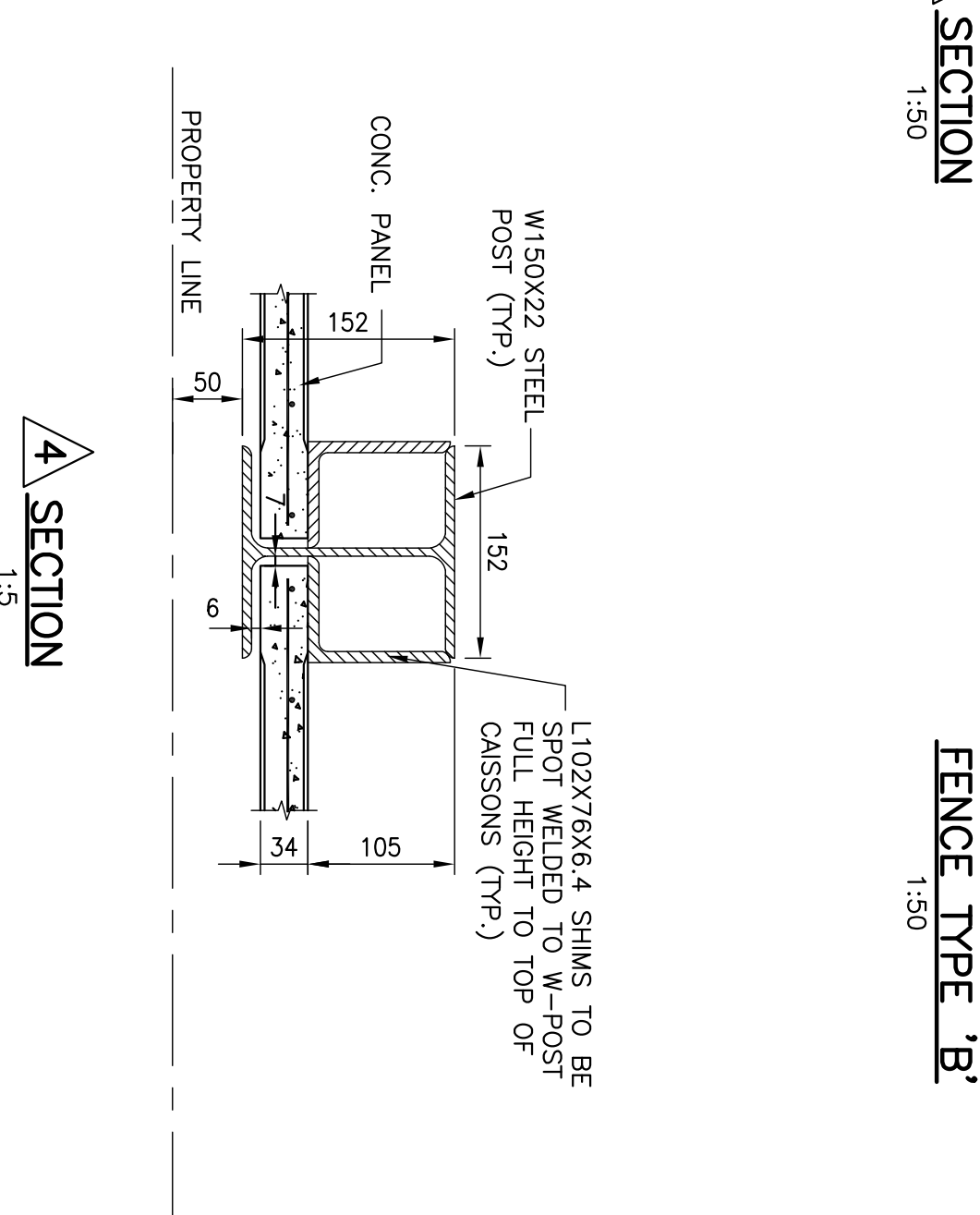
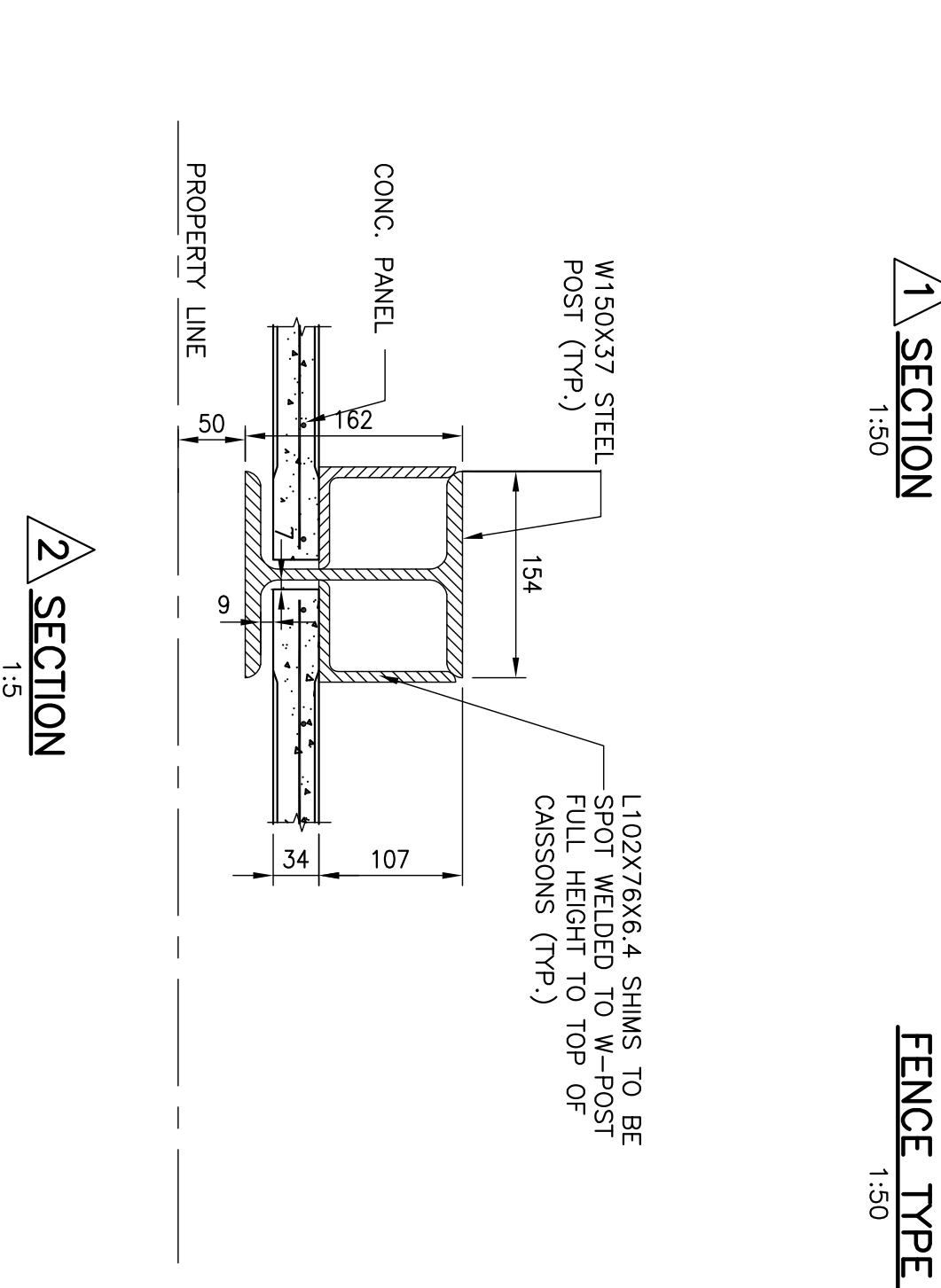
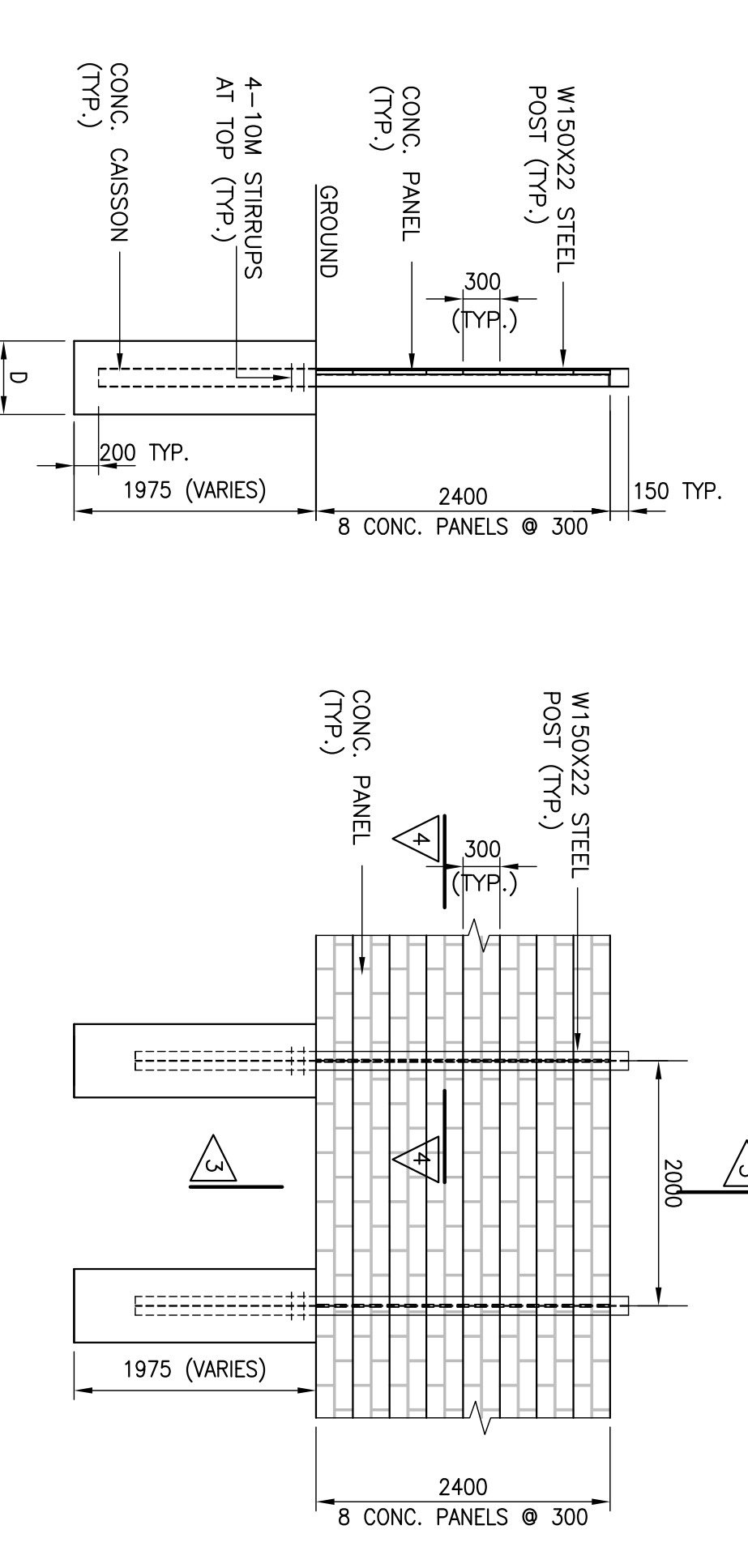
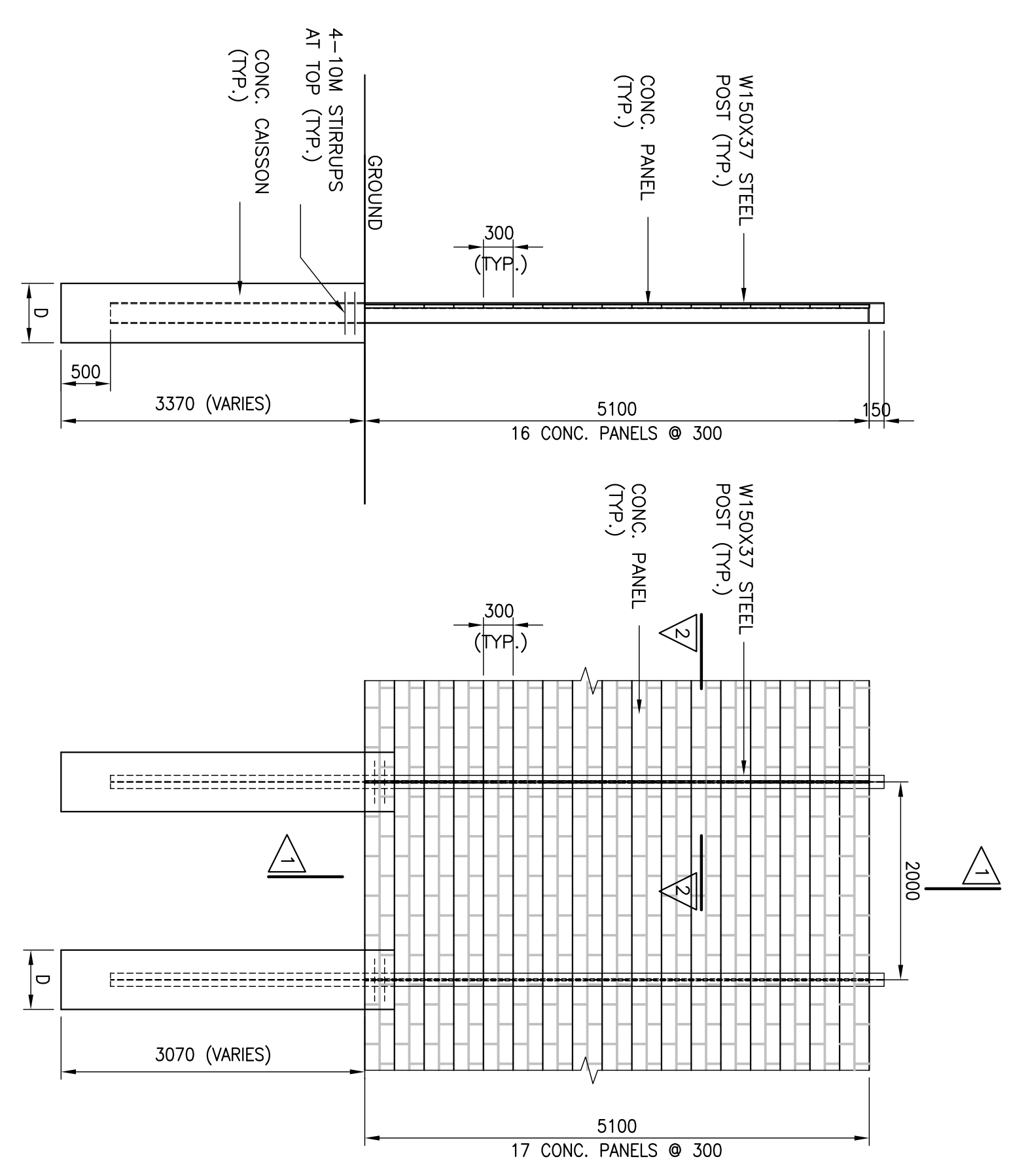
SURVEY DATA:
 DRAWN BY: B.H.
 DATE: 11/11/11
DESIGN INFORMATION:
 DRAWN BY: B.H.
 DATE: 11/11/11
 DESIGN BY: N.G.K.
 DATE: 11/11/11
 CHECKED BY: R.C.
 DATE: 11/11/11

**TYPICAL NOISE BARRIER
 DETAIL-POST SPACING - 2.00m**

PLANMAC INC.
 CONSULTING ENGINEERS
 15 North Queen St., Suite 105
 Toronto, Ontario, M5Z 5C1
 CANADA
 Tel: (416) 528 - 5300 FAX: (416) 622 - 6710

DURACRETE FENCE
 BARRIER HEIGHT : 2.40m & 5.10m
 SPAN : 2.00m

DATE: 18/04/12
 SCALE: AS SHOWN
 DRAWING NO. : S-1
 PROJECT ID: 1131
 SHEET NO.: **1 OF 2**



CONCRETE PANEL SECTION (TYP.)

CONCRETE PANEL ELEVATION

TYPICAL CAISSON SECTION