



**Portable Dog & Utility Pen**  
6' Wide X 10' Long X 6' High



Thank you for choosing this kennel. Please take the time to read and follow these instructions. Start by choosing a flat area for assembling your kennel. This will make set up much easier. It is best to remove everything from the box and arrange the contents as shown on the next page. You will also need a hammer, a pair of pliers and an adjustable wrench. If any parts are missing, please call our customer service number: 1-800-667-3965 or 905-951-9063

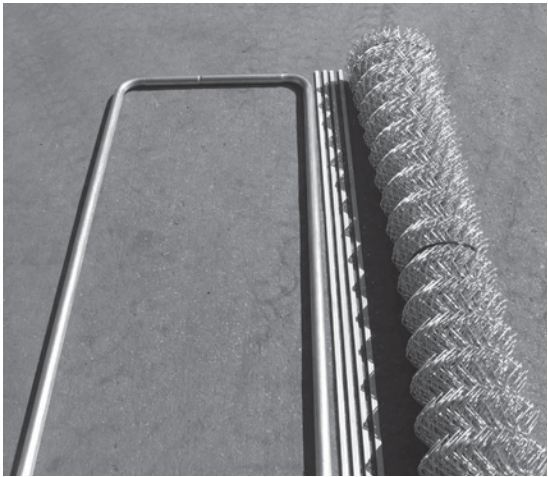
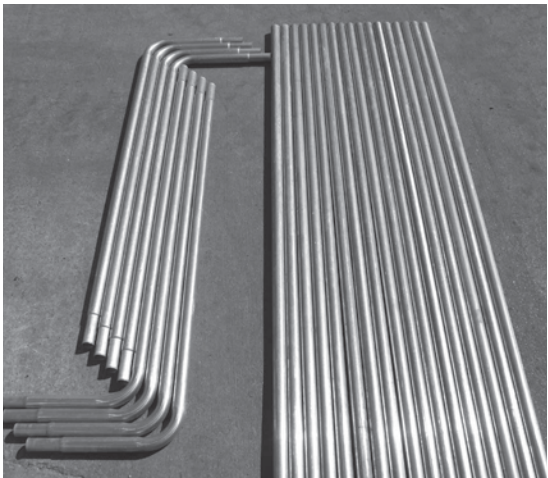


ASSEMBLY INSTRUCTIONS

Part #	Material List	# of Pieces
1	3/8" X 2" Carriage Bolt	4 pcs
2	5/16" X 1 3/4" Carriage Bolt	18 pcs
3	Aluminum Tie Wire	1 bag
4	Tension Rod Clip	20 pcs
5	Female Hinge	2 pcs
6	Gate Latch Assembly	1 pcs
7	Male Hinge	2 pcs
8	Rail Clamp	18 pcs
9	Bent Frame Rail	8 pcs
10	Vertical Frame Post 70"	8 pcs
11	Frame Rail 52"	4 pcs
12	Frame Rail 34"	4 pcs

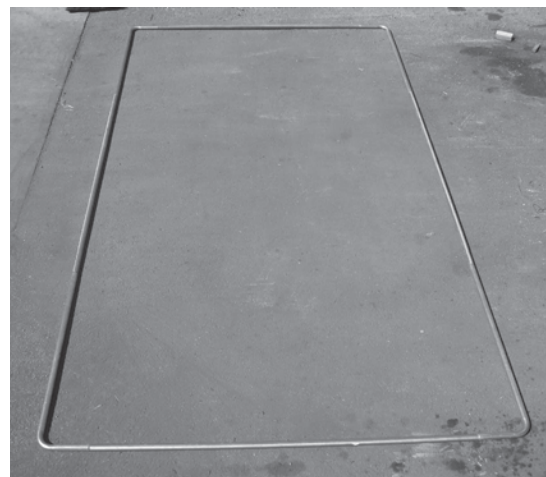
The Swag Frame Rails have a reduced diameter on one end.

13	Chain Link Wire	1 roll
14	Gate Frame Rail	2 pcs
15	Tension Rod	4 pcs



## STEP 1

Place the four Bent Frame Rails (#9), two of the Frame Rails (#11) and two of the frame rails (#12) on the ground as shown right.



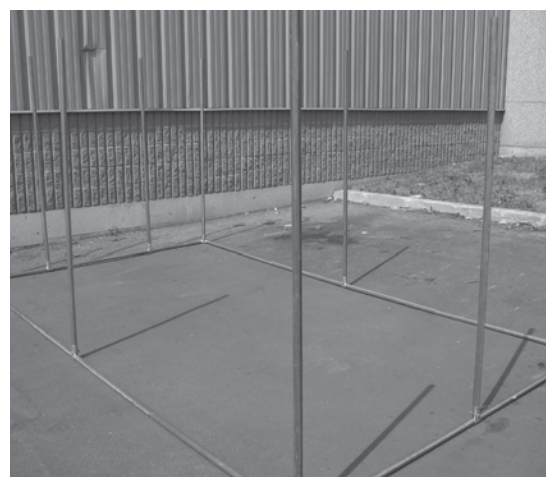
## STEP 2

Push the swaged end of the Bent Frame Rail into the end of the first Frame Rail. Continue joining all frame rails until you have one complete unit as shown at right.



## STEP 3

Place one Rail Clamp (#8) (shown at right) in the center of each corner and at the midpoint of all sides of the bottom rail assembly using a 5/16" X 1 3/4" Carriage Bolt (#2). Do not fully tighten the nuts.

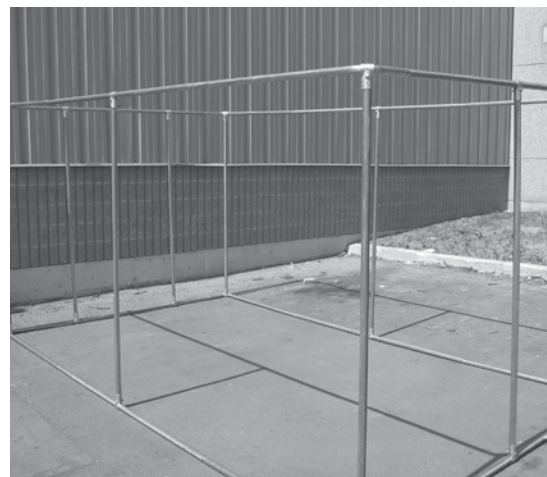


## STEP 4

Slip one Vertical Frame Post (#10) into the Rail Clamp (1 at each corner and midpoints on each side). Tighten the nuts snugly, just enough to hold the Vertical Frame Post in an upright position.

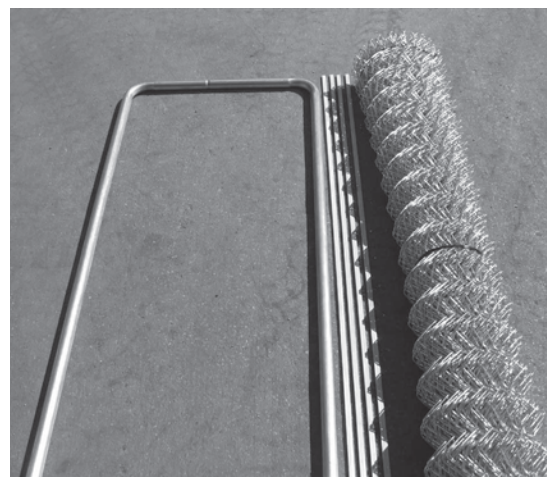
## STEP 5

The top frame rail assembly is put together next. Using four Bent Frame Rails (#9) and two Frame Rails (#11), push the pieces together exactly as you did in step #2. At this point a helper or two will be very handy. With your assistant(s), lift the entire top frame rail assembly directly over the bottom frame rail assembly. Balancing the top assembly on the upright posts, begin attaching the top frame to the uprights using the Rail Clamps as you did in step #3. Continue around until you have installed the top frame rail assembly as shown in the photo at right. Check that all posts are straight up and down. Now tighten all the nuts and bolts on the sixteen Rail Clamps.

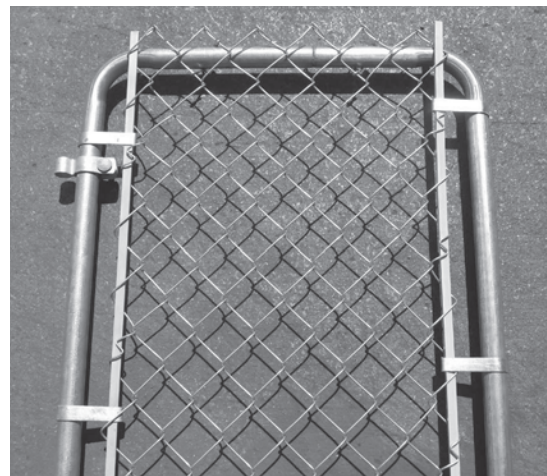


## STEP 6

Place Gate Frame Rails (#14) on a flat surface. The swaged end should alternate, one at the top and one at the bottom. Push the swaged ends together to make a tight fit. Place the roll of Chain Link Wire (#13) alongside the gate and unroll just enough to overlap the width of the gate.



Insert one Tension Rod (#15) vertically into diamond of fabric and continue to thread the rod down through the fabric until you reach the bottom. Attach the fabric to the side of the gate using five Tension Rod Clips (#4) spaced evenly along the one side. Unweave one link in the fabric approximately 3" away from the side opposite the one attached to the frame and repeat step #6 (B). Make sure the fabric fits tight over the width of the gate. You may have to remove one more link. Once the gate is assembled, install Tie Wires (#3) spaced evenly on top and bottom of the gate.





## STEP 7

You may install the gate along any one of the four sides of the kennel. Position the two Male Hinges (#7) on any Vertical Frame Post 10" to 12" from the top frame rail and 10" to 12" from the bottom frame rail using the 3/8" X 2" Carriage Bolts (#1). The pin on the bottom hinge must point up (see photo at right). A hammer may be needed to drive the hinges over the Vertical Frame Post. With the chain link fabric on the gate facing outside, position the two Female Hinges (#5) on the gate frame using 3/8" X 2" Carriage Bolts (#1). Slide the Female Hinges over the pins on the Male Hinges. Adjust the placement of the hinges until you have approximately 1" clearance between the gate and the bottom frame rail. Tighten hinge bolts snugly.



## STEP 8

Next install the gate latch post, using the last Vertical Frame Post. Using a Rail Clamp (#8) at the top and bottom to install the Vertical Frame Post as you did in step #4. Check to see that the post is approximately 2" from the edge of the gate frame when the gate is closed. Do not tighten bolts until step #9 is complete.

## STEP 9

Install Gate Latch Assembly (#6) on the gate as shown at right. First remove the nut and bolt on the latch collar. Slide the latch collar around the gate frame. Reinstall the nut and bolt. Be sure that the latch is installed as shown. Check that the gate operates correctly. Put the fork in the open position (flip upwards) and close the gate. Lower the fork. If gate latch does not close properly adjust gate latch post until you have enough clearance. When the gate operates correctly tighten the fork bolt so that it takes firm pressure to move the fork. Tighten other nuts. Do not overtighten.



## STEP 10

The Chain Link Wire (#13) is next. Stand the role of wire up at the corner where you installed the gate. Insert one Tension Rod (#14) vertically into the top diamond and continue threading down through the fabric until you reach the bottom. Take five Tension Rod Clips (#4) and attach them spacing them evenly along the Tension Rod and the corner gate hinge post. While your assistant keeps tension on the Tension Rod and Tension Rod Clips, begin unrolling the fabric around the frame, taking care to keep constant tension on the roll. This will prevent the top and bottom knuckles of the fabric from becoming tangled. At approximately every three feet secure the fabric loosely to the top frame with a Tie Wire (#3). Continue unrolling the wire and loosely tying the wires around the frame until you reach the gate latch post.

Now go back to the first vertical corner post past your initial hook-up. Insert your pliers or hammer handle into the fabric and lever it against the post to tighten the fabric as shown in photo. While holding the fabric tight, insert one Tie Wire about 8" from the top frame rail. Continue tensioning the fabric and installing ties until you reach the bottom. Proceed to the next post and repeat until the three corner posts are done.





## STEP 11

The next step is to attach the fabric to the gate latch post. Insert one Tension Rod (#15) vertically into the diamond (photo at right) and continue threading the rod down through the fabric until you reach the bottom. Take a Tension Rod Clip (#4) and attach it near the top of the gate latch post. Continue installing the Tension Rod Clips down the post, stretching the fabric by hand as you go, until all the clips are installed. You may need the help of your assistant to install the clips. However, if the fabric will not stretch tight enough, you may need to remove one or more strands of wire. Remove the rod clips and tension rod. Using your pliers “unhook” the wire knuckles at the top and bottom of the fabric. You can now remove the strand by turning it in a corkscrew motion. Repeat step #11 to reinstall the Tension Rod and Tension Rod Clips.

## STEP 12

Starting at the gate hinge post install Tie Wire every fourth diamond, securing the fabric to the top frame rail. Continue around the kennel until you reach the latch post. Do not place a tie wire closer than 6” to any vertical post. Repeat this procedure around the bottom frame rail. Installing the Tie Wires on the bottom frame rail will be much easier if you can raise the kennel up six inches or so. These last steps complete the assembly of your Dog and Utility Pen.





10 Holland Drive, Bolton, ON L7E 1G6  
1-800-667-3965 or 905-951-9063

[www.romafence.com](http://www.romafence.com)