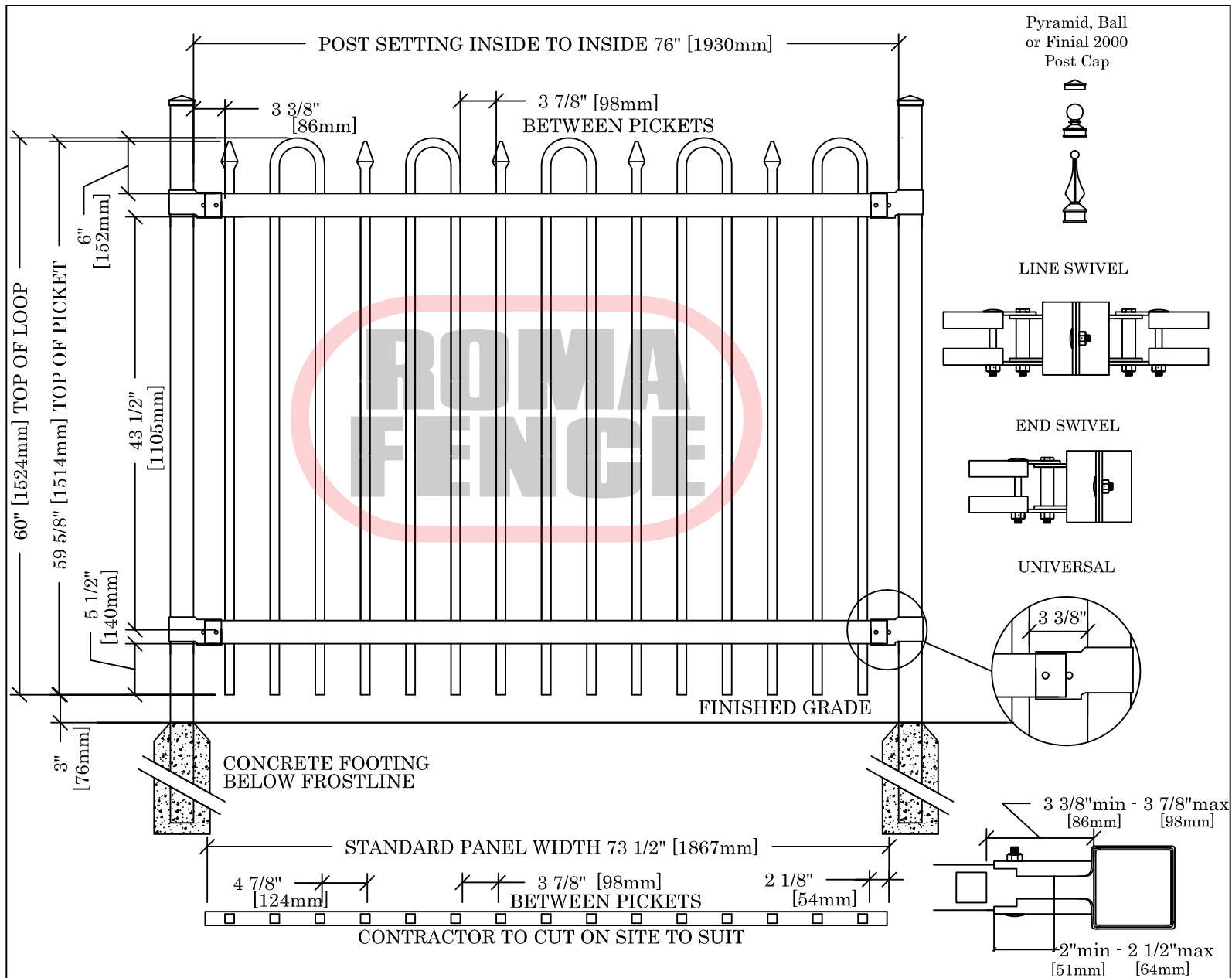


# THE IMPERIAL PLUS COLLECTION

## PRINCE PLUS



### SPECIFICATIONS

<b>POSTS, RAILS, PICKETS</b>		<b>Fittings:</b>	15 Gauge Stamp Forged Factory Finish, As Above
Cold Formed Steel Tubing, Interior & Exterior Galvalume Coating, Chromate Conversion Coating, Electrostatically Applied, Thermally Bonded Polyester Powder Coating Minimum Film Thickness 2.5 Mils E-Coat dipped prime coat (optional)		<b>Welds:</b>	Stainless Steel
		<b>Standard Panel Width:</b>	73 1/2" (1867mm)
		<b>Standard Panel Heights:</b>	48" (1219mm) 60" (1524mm) Custom Heights Available* * E-Coat only available 6' & under
<b>Posts:</b>	3" x 3" (76mm x 76mm) Schedule 40 4" x 4" (102mm x 102mm) Schedule 40 6" x 6" (152mm x 152mm) Schedule 40	<b>Standard Gate Openings Inside Posts:</b>	45 1/2" (1156mm) 60 1/4" (1530mm) 74 1/4" (1892mm)
<b>Standard Post Spacing:</b>	76" (1930mm) Inside Dimension	<b>Colours:</b>	Standard - High Gloss Black, High Gloss White Optional Colours - Fence Brown, Fence Green Custom Colours Available Upon Request
<b>Post Caps:</b>	Pyramid, Ball or Finial 2000	<b>Warranty:</b>	See Warranty Supplement
<b>Rails:</b>	2 1/2" x 1 1/2" (64mm x 38mm) 14 Gauge		
<b>Pickets:</b>	1" x 1" (25mm x 25mm) 18 Gauge		

